



43 Byron Road, Greenmount

Bury

£399,950



43 Byron Road

Greenmount, Bury

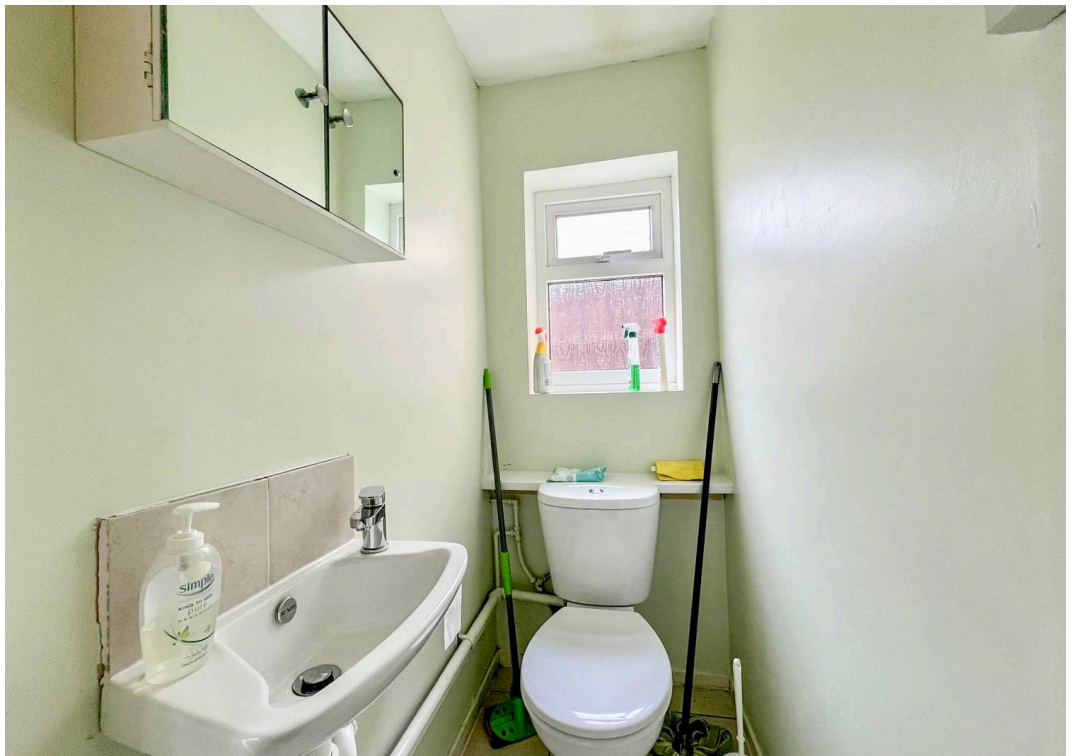
Detached 3-bed home on a large south-facing plot in Greenmount. No chain. Features garage, garden, scope to modernise, top schools, great transport links, and future extension potential (STPP).

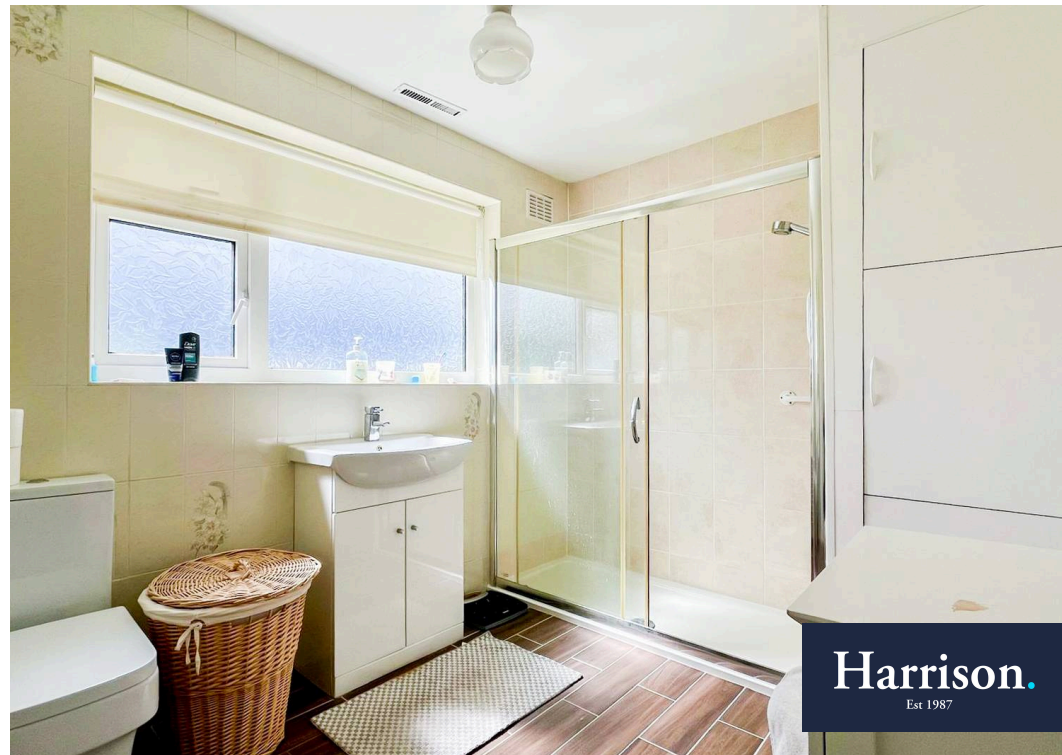
Council Tax band: D

Tenure: Freehold

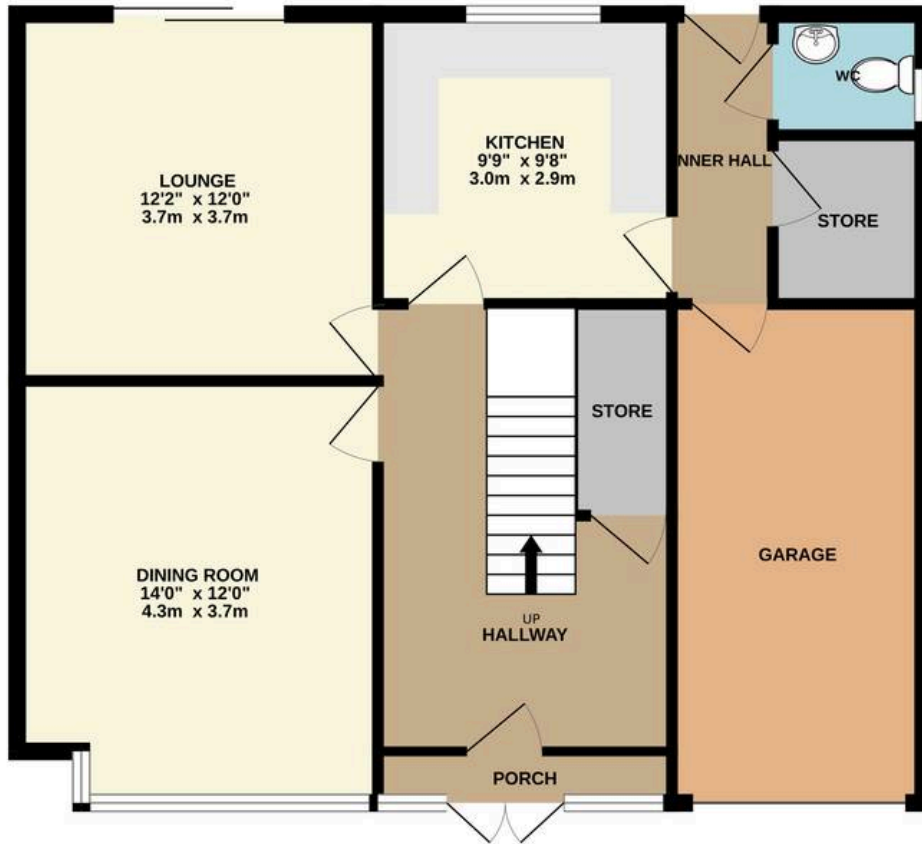
- Freehold detached home with no onward chain, set on a substantial plot in sought-after Greenmount.
- Spacious hallway with built-in storage and access to the lounge, dining room and kitchen.
- Bay-fronted dining room and bright rear lounge overlooking the private garden.
- Practical kitchen linking to an inner hall with garden access, ground-floor W/C, storage room and integral garage.
- Three double bedrooms plus a large family bathroom with scope to modernise.
- South-facing garden offering sunshine, privacy and potential for landscaping or extension (STPP).
- Greenmount lifestyle with excellent schools, cafés, shops and a strong community feel.
- Great commuter links with easy access to Bury, Ramsbottom, motorway routes and countryside walks.
- Rare opportunity combining plot size, privacy & future potential in a chain-free family home.



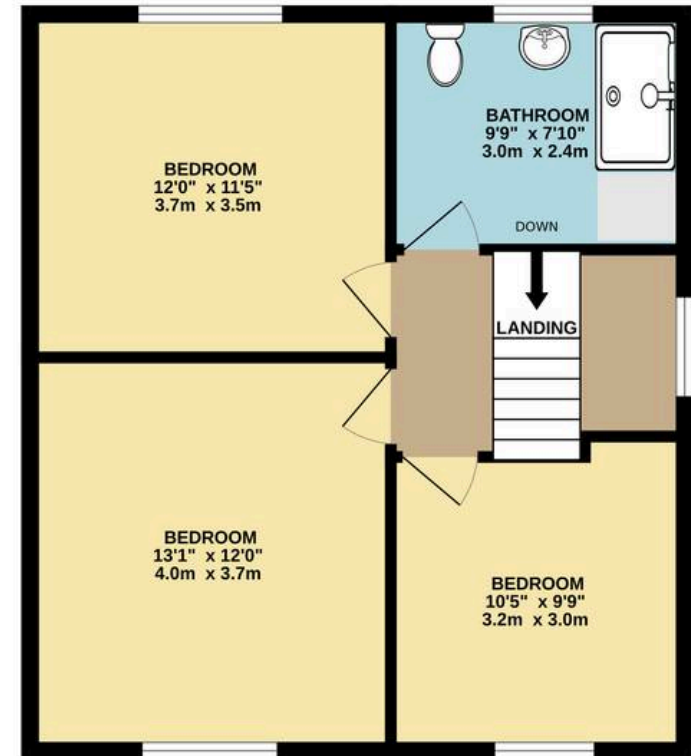




GROUND FLOOR
786 sq.ft. (73.0 sq.m.) approx.



1ST FLOOR
534 sq.ft. (49.6 sq.m.) approx.



TOTAL FLOOR AREA : 1320 sq.ft. (122.6 sq.m.) approx.

Whilst every attempt has been made to ensure the accuracy of the floorplan contained here, measurements of doors, windows, rooms and any other items are approximate and no responsibility is taken for any error, omission or mis-statement. This plan is for illustrative purposes only and should be used as such by any prospective purchaser. The services, systems and appliances shown have not been tested and no guarantee as to their operability or efficiency can be given.

Made with Metropix ©2026



HARRISON ESTATE AGENTS

Harrison Estate Agents, 10 Bolton Street - BL9 0LQ

0161 797 8616

info@harrison-estates.co.uk

www.harrison-estates.co.uk