



16 Haig Court Haig Road, Bury

Bury

£215,000



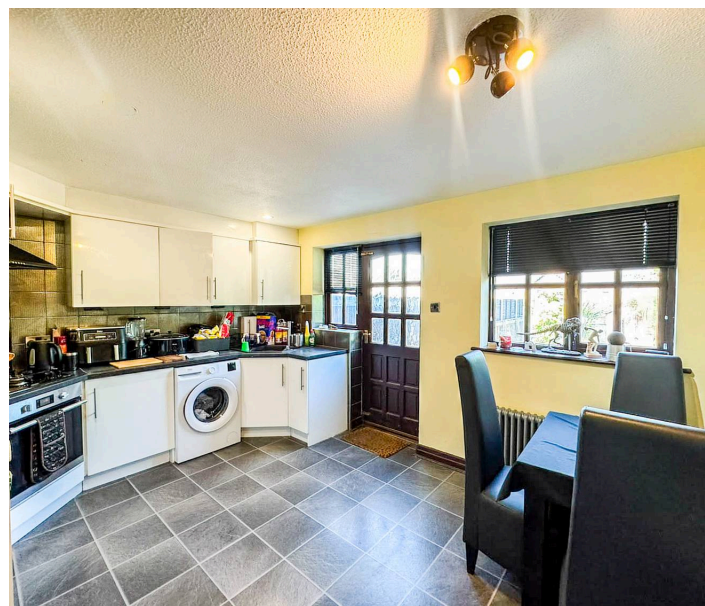
16 Haig Court, Haig Road

Bury

No onward chain. Three-bedroom mews with ensuite, modern kitchen-diner, large sunny garden, driveway, quiet setting. Near Bury, schools, shops, parks, and commuter links. Council Tax band: C

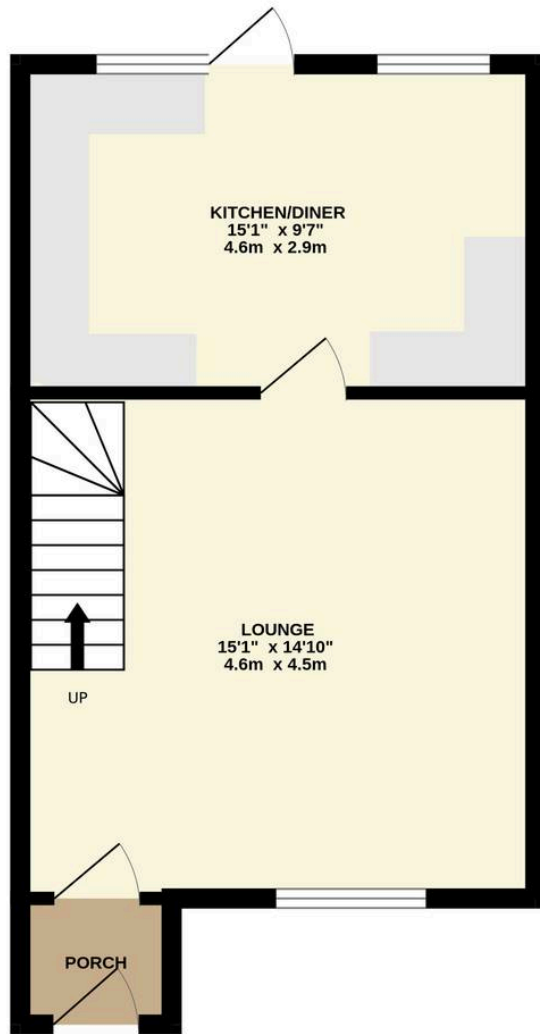
Tenure: Leasehold

- Spacious three-bedroom mews with double driveway offering generous front and rear plots, two bathrooms and a sought-after position in a popular pocket of Bury
- Welcoming porch entrance leading into a bright, well-proportioned front lounge ideal for everyday family living
- Open kitchen-diner layout at the rear, providing a sociable cooking and dining space with direct garden access
- Three well-sized bedrooms including master with private ensuite
- Contemporary family bathroom
- Large, sunny rear garden with flat lawn
- Excellent local amenities with shops, parks, leisure facilities and everyday essentials all within easy reach
- Strong commuter connections to Bury, Bolton, Manchester and surrounding towns, plus access to well-regarded local schools
- Ideal home for growing families combining space, practicality and a great location to create a standout long-term move

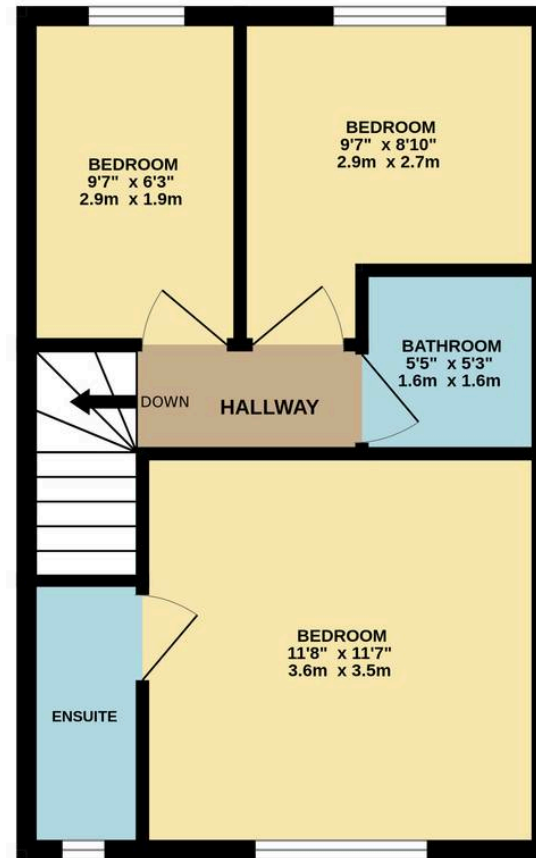




GROUND FLOOR
384 sq.ft. (35.7 sq.m.) approx.



1ST FLOOR
368 sq.ft. (34.2 sq.m.) approx.



TOTAL FLOOR AREA : 752 sq.ft. (69.9 sq.m.) approx.

Whilst every attempt has been made to ensure the accuracy of the floorplan contained here, measurements of doors, windows, rooms and any other items are approximate and no responsibility is taken for any error, omission or mis-statement. This plan is for illustrative purposes only and should be used as such by any prospective purchaser. The services, systems and appliances shown have not been tested and no guarantee as to their operability or efficiency can be given.
Made with Metropix ©2026



HARRISON ESTATE AGENTS

Harrison Estate Agents, 10 Bolton Street - BL9 0LQ

0161 797 8616

info@harrison-estates.co.uk

www.harrison-estates.co.uk