



336 Wellington Court Bolton Road, Bury

Bury

£125,000



336 Wellington Court Bolton Road

Bury

No onward chain. Modern two-bed apartment with fitted wardrobes, garage, parking, and communal gardens. Quiet BL8 location near Bury, transport links, shops, and schools. Ready to move in.

Council Tax band: A

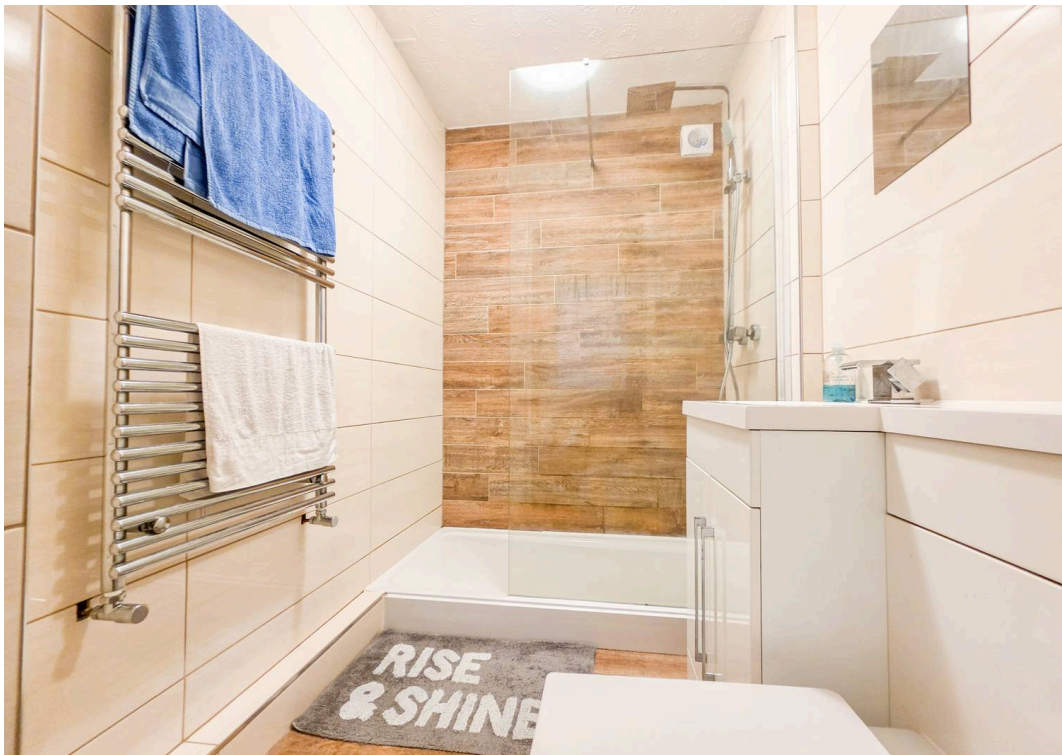
Tenure: Leasehold

EPC Energy Efficiency Rating: D

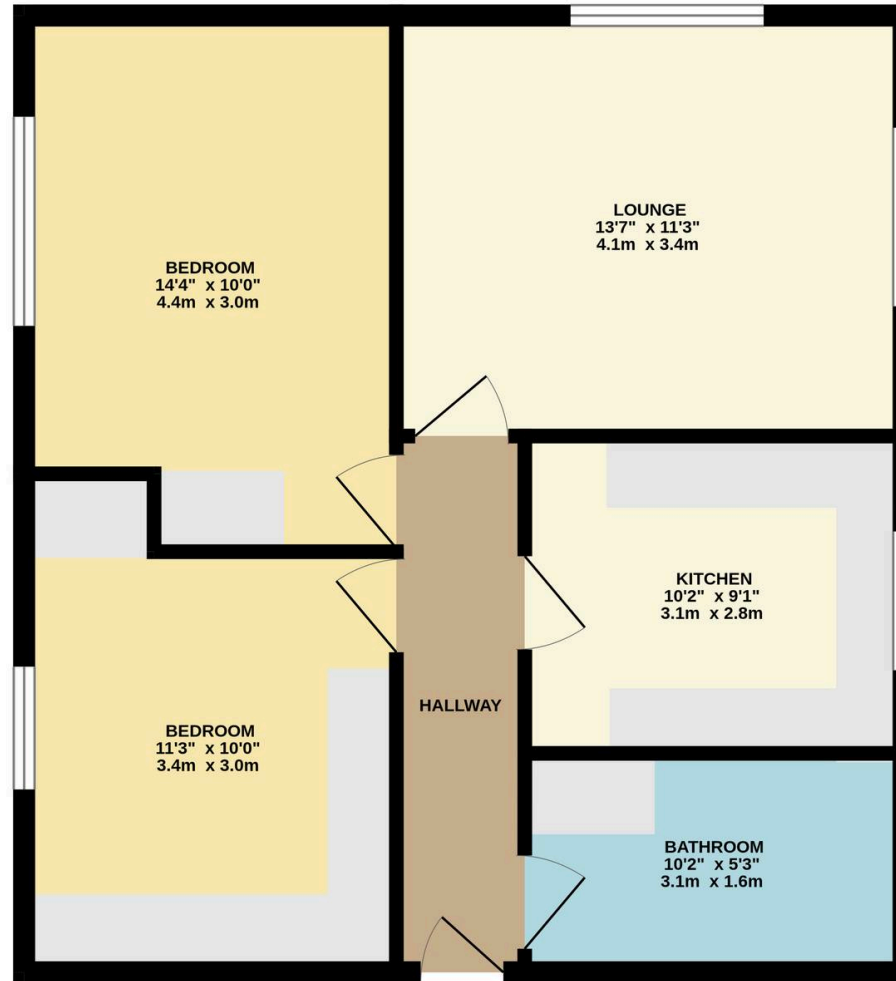
EPC Environmental Impact Rating: D

- Stylish 2 bedroom apartment with bright interiors, contemporary finishes and a private garage for parking or storage
- Generous lounge, modern kitchen, two well-proportioned double bedrooms with fitted wardrobes and a spacious, contemporary shower room
- Garage, off-road parking, neat communal gardens and a striking floor-to-ceiling glass staircase leading up to the apartment
- Positioned close to shops, cafés, leisure facilities and everyday essentials in a well-connected BL8 location
- Excellent access to Bury town centre, main bus routes and wider motorway connections for easy daily travel
- Near respected schools, rural walks and community facilities, making it a great long-term choice for first time buyers or young families
- A beautifully maintained, bright and generously sized apartment offering a modern





GROUND FLOOR
603 sq.ft. (56.0 sq.m.) approx.



TOTAL FLOOR AREA : 603 sq.ft. (56.0 sq.m.) approx.

Whilst every attempt has been made to ensure the accuracy of the floorplan contained here, measurements of doors, windows, rooms and any other items are approximate and no responsibility is taken for any error, omission or mis-statement. This plan is for illustrative purposes only and should be used as such by any prospective purchaser. The services, systems and appliances shown have not been tested and no guarantee as to their operability or efficiency can be given.
Made with Metropix ©2026



HARRISON ESTATE AGENTS

Harrison Estate Agents, 10 Bolton Street - BL9 0LQ

0161 797 8616

info@harrison-estates.co.uk

www.harrison-estates.co.uk