



66 Newington Drive

Seddons Farm, Bury

£330,000



66 Newington Drive

Seddons Farm, Bury

Spacious 3-bed home with modern kitchen, ensuite, landscaped gardens, driveway parking, and flexible living. Sought-after area near schools, transport links, shops, and parks.

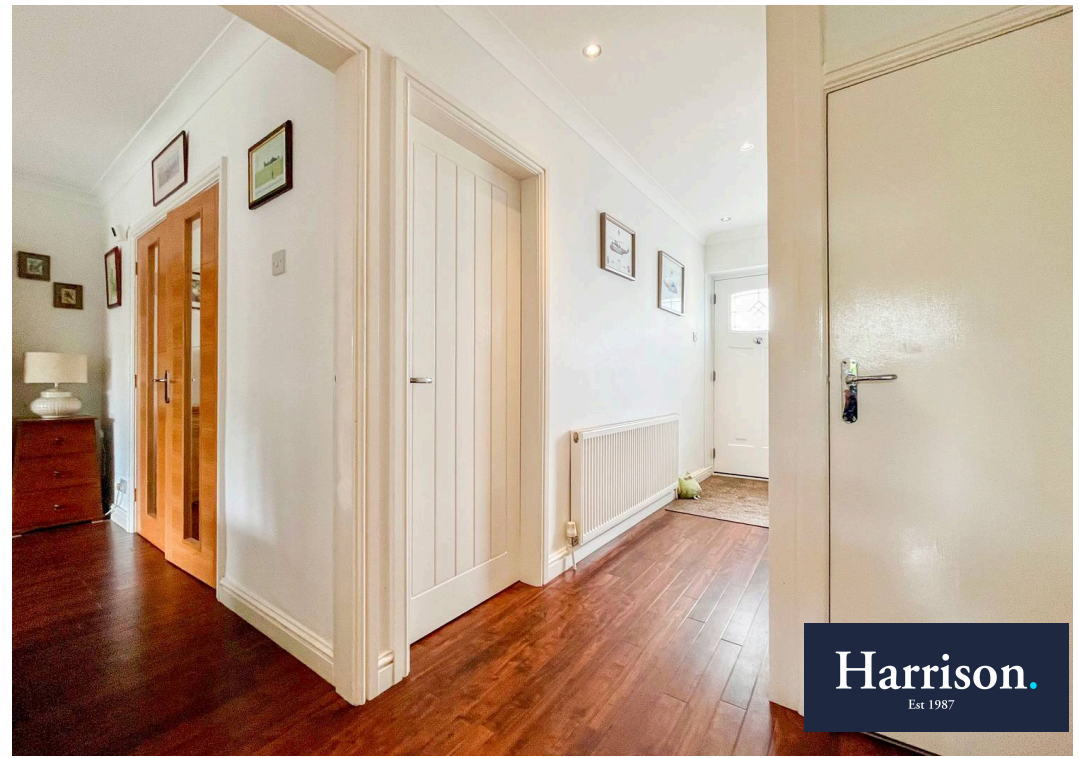
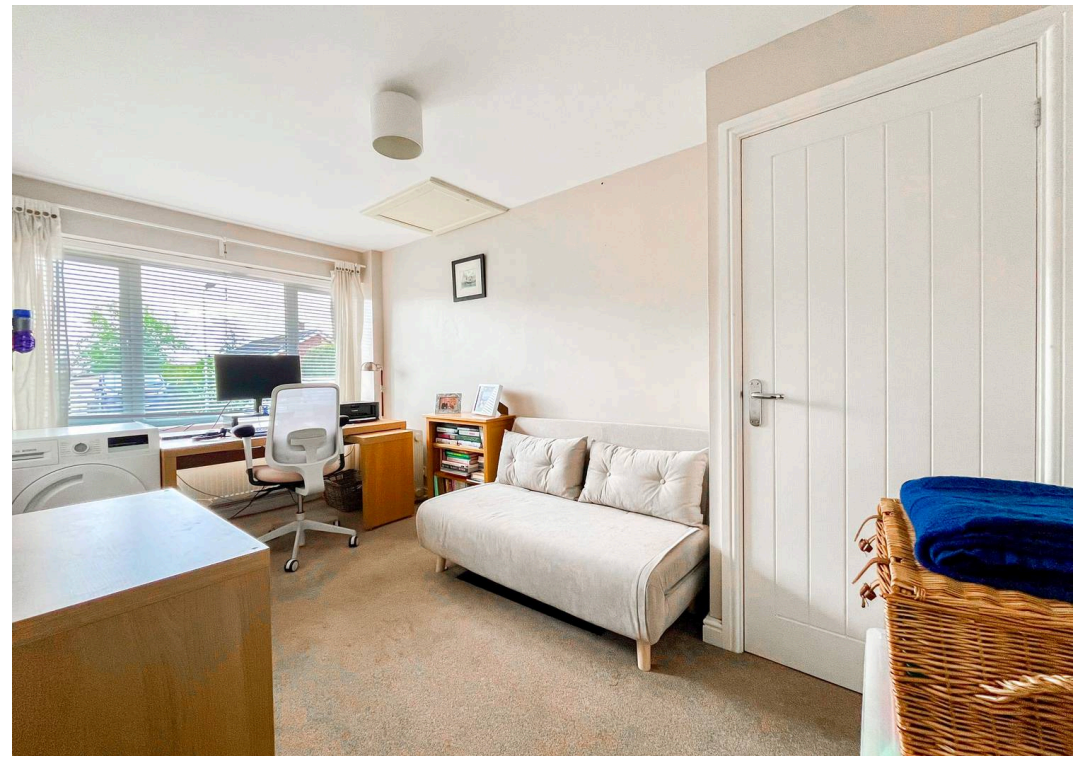
Council Tax band: C

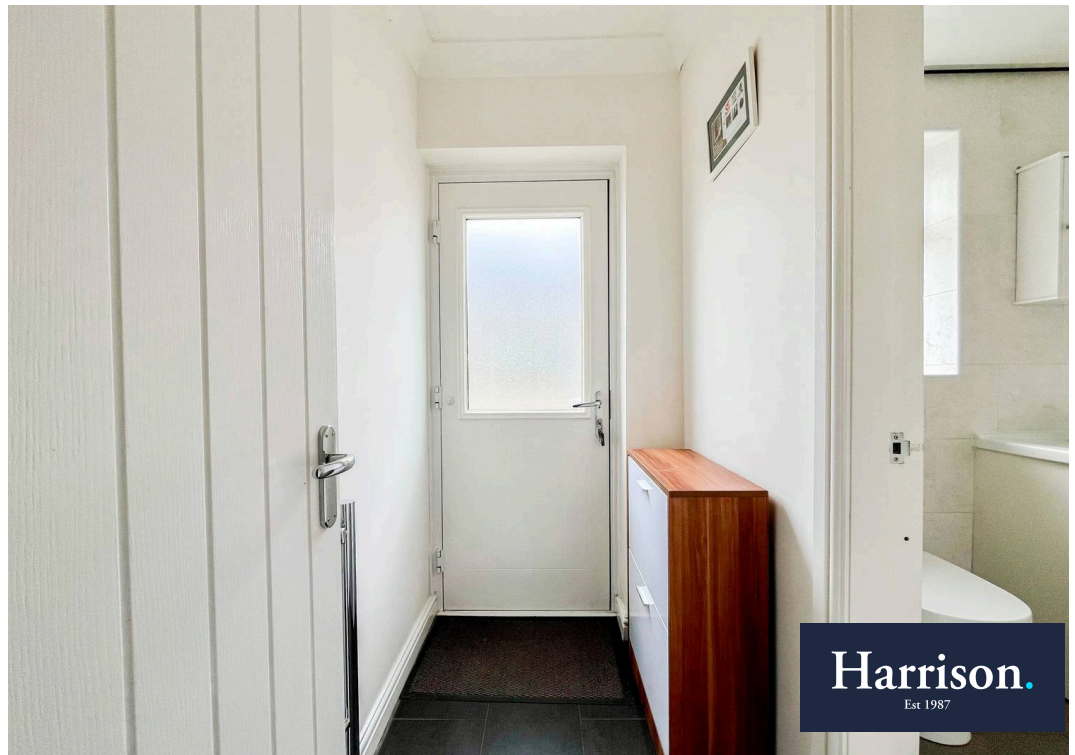
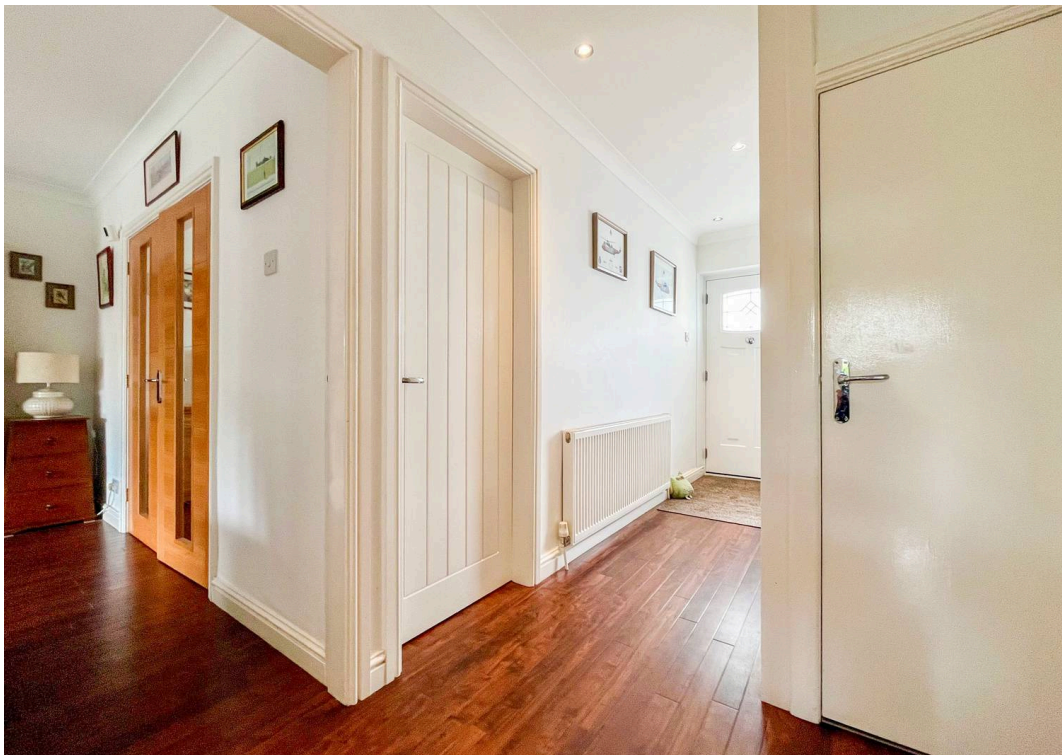
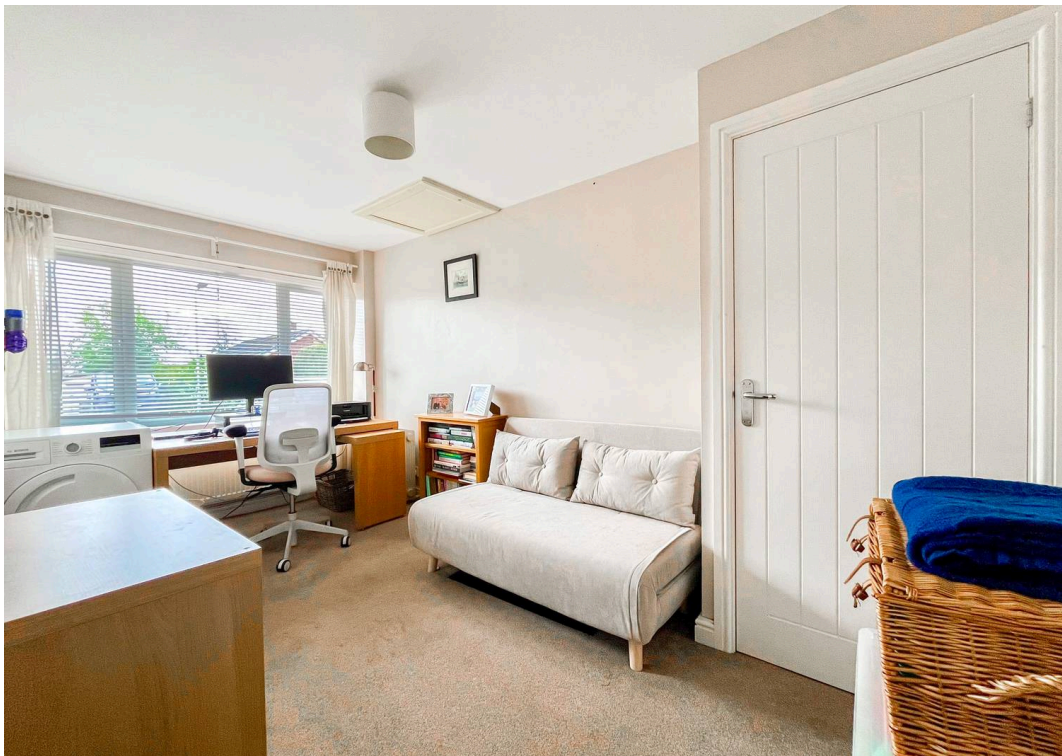
Tenure: Leasehold

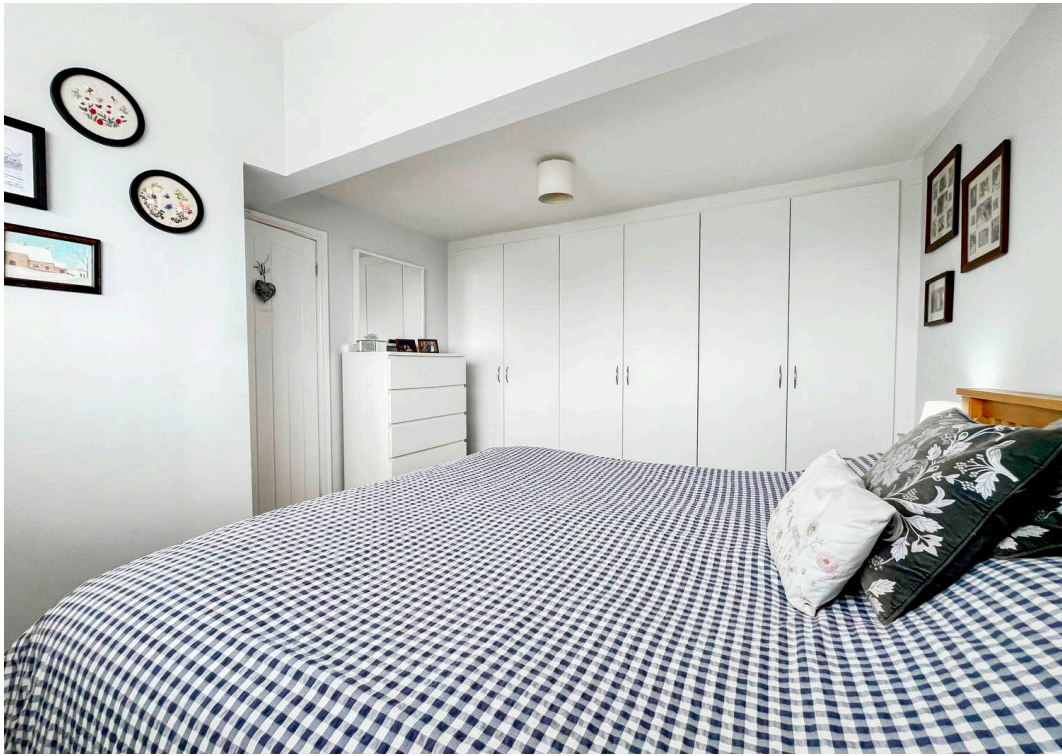
EPC Energy Efficiency Rating: D

- **K-rendered dormer bungalow** in a popular Seddons Farm position.
- **Bright lounge** opening to a dining room with French doors to the garden.
- **Modern fitted kitchen** with integrated appliances.
- **Rear hall** giving access to a contemporary ground-floor bathroom.
- **Spacious ground-floor double bedroom** offering flexible use.
- **Two first-floor double bedrooms** with eaves storage and a master ensuite.
- **Landscaped gardens** front and rear with a private lawned rear plot.
- **Driveway parking** for multiple vehicles.
- **Seddons Farm location** close to amenities, transport links and schools.
- **Ideal for families or downsizers** with a practical, adaptable layout.

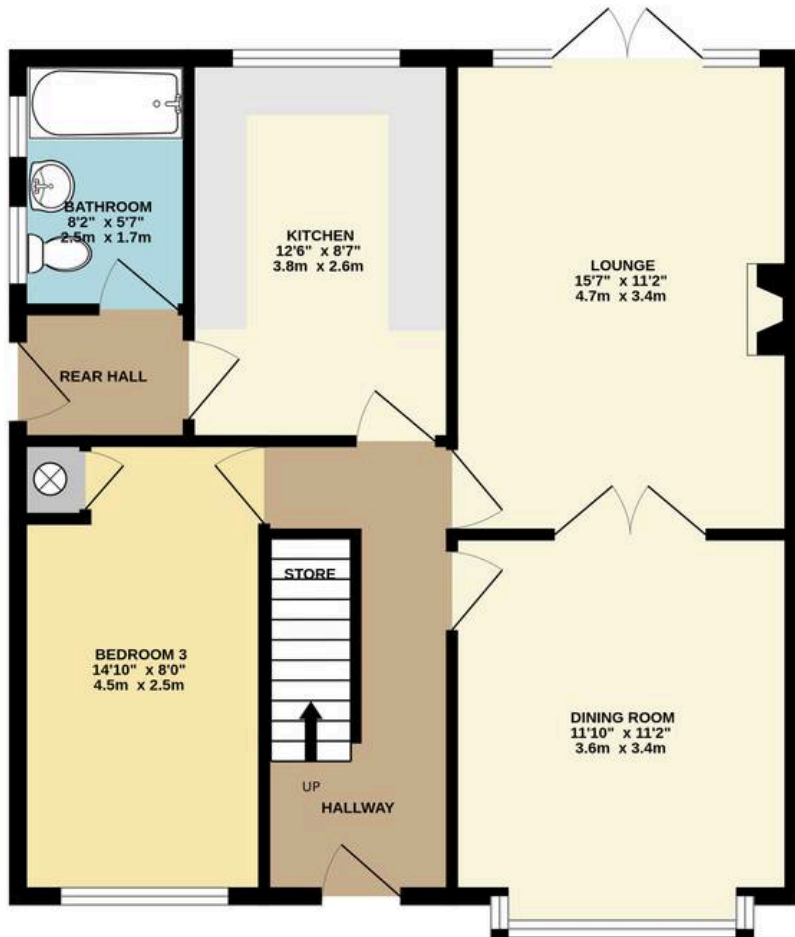




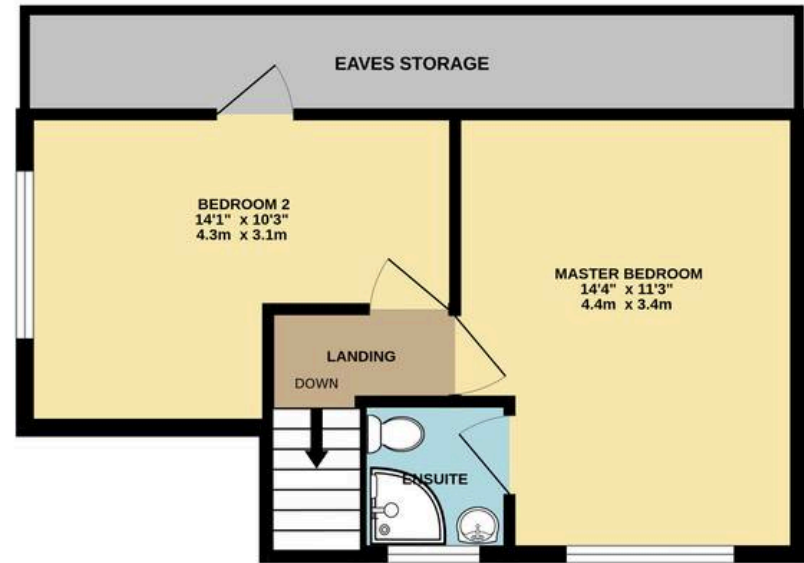




GROUND FLOOR
698 sq.ft. (64.8 sq.m.) approx.



1ST FLOOR
416 sq.ft. (38.6 sq.m.) approx.



TOTAL FLOOR AREA : 1114 sq.ft. (103.5 sq.m.) approx.

Whilst every attempt has been made to ensure the accuracy of the floorplan contained here, measurements of doors, windows, rooms and any other items are approximate and no responsibility is taken for any error, omission or mis-statement. This plan is for illustrative purposes only and should be used as such by any prospective purchaser. The services, systems and appliances shown have not been tested and no guarantee as to their operability or efficiency can be given.
Made with Metropix ©2026



HARRISON ESTATE AGENTS

Harrison Estate Agents, 10 Bolton Street - BL9 0LQ

0161 797 8616

info@harrison-estates.co.uk

www.harrison-estates.co.uk