



224 Bury Road, Tottington

Bury

£245,000



224 Bury Road

Tottington, Bury

Spacious 3-bed end-terrace in Tottington with character features, large rooms, modern kitchen, sunny garden, garage, great schools and transport links. Ideal for families or investors. Council Tax band: C

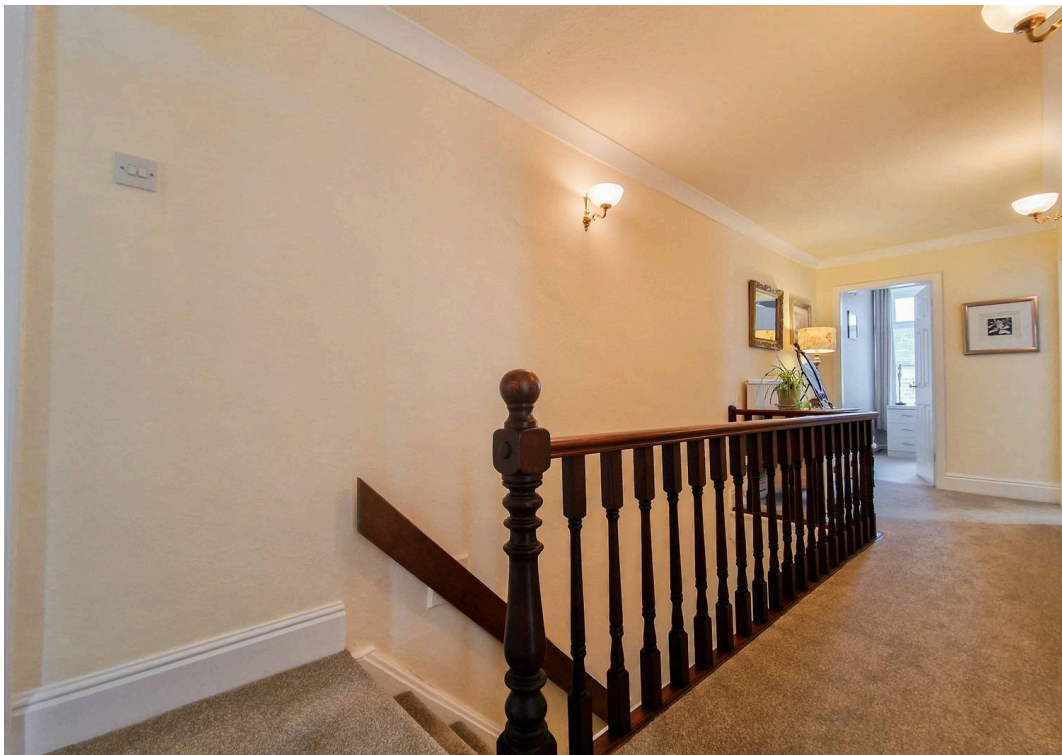
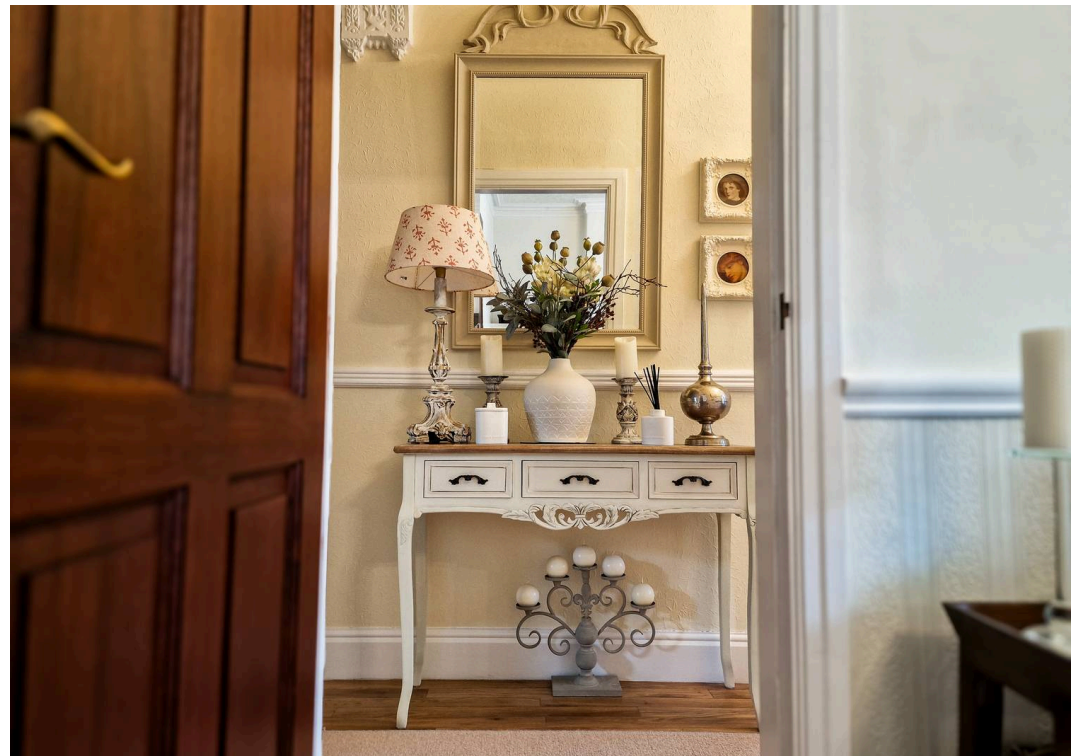
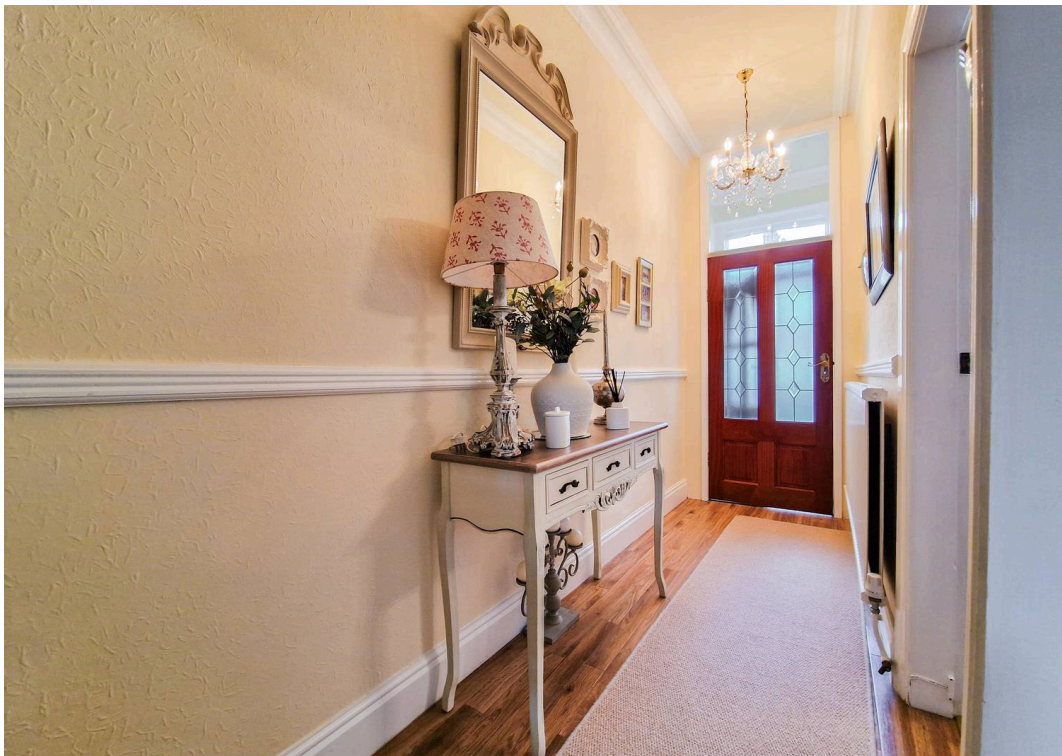
Tenure: Leasehold

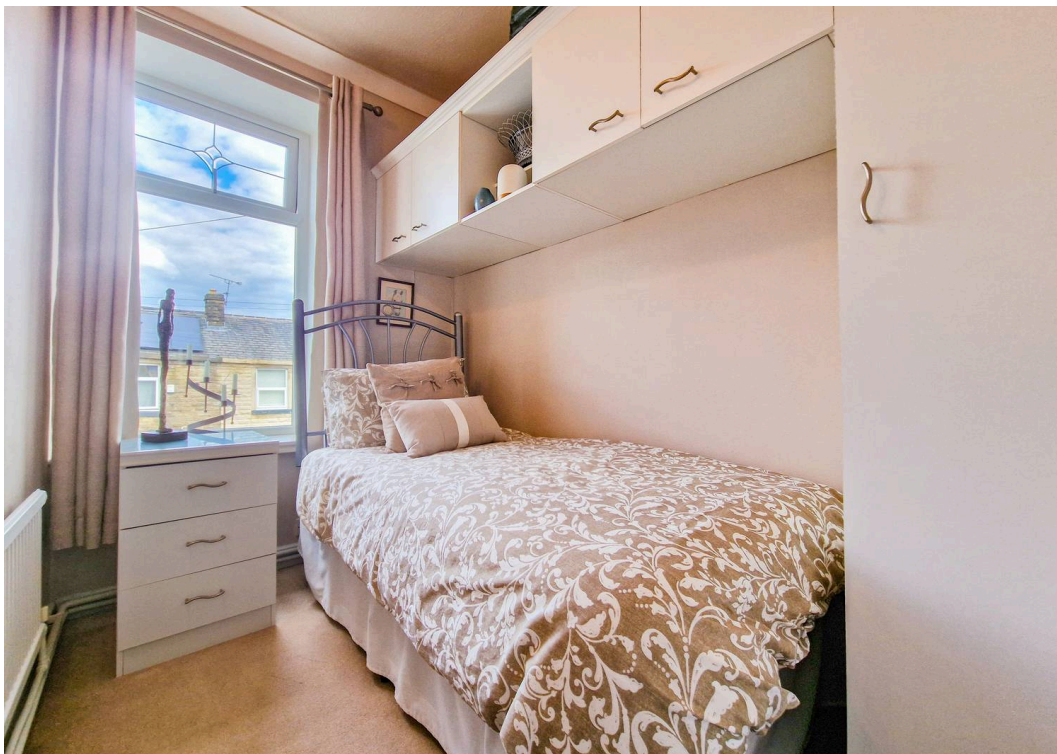
- NO ONWARD CHAIN – Deceptively spacious three-bedroom end-terrace with character features, double-storey extension and a detached garage in a highly desirable Tottington position
- Detached single garage providing secure parking or valuable storage/workshop
- Entrance porch opening into a broad hallway, large bay-fronted lounge. Expansive dining/family room with French doors. Extended kitchen fitted with integrated appliances, excellent worktop space and abundant cabinet storage
- Two well-sized double bedrooms upstairs alongside a comfortable third bedroom ideal for a child, office or dressing room
- Impressive four-piece bathroom suite providing standout space and comfort
- Sunny rear garden of a good size, offering plenty of room for play, entertaining or future landscaping ideas
- Desirable Tottington setting close to schools, shops, rural walks and commuter links





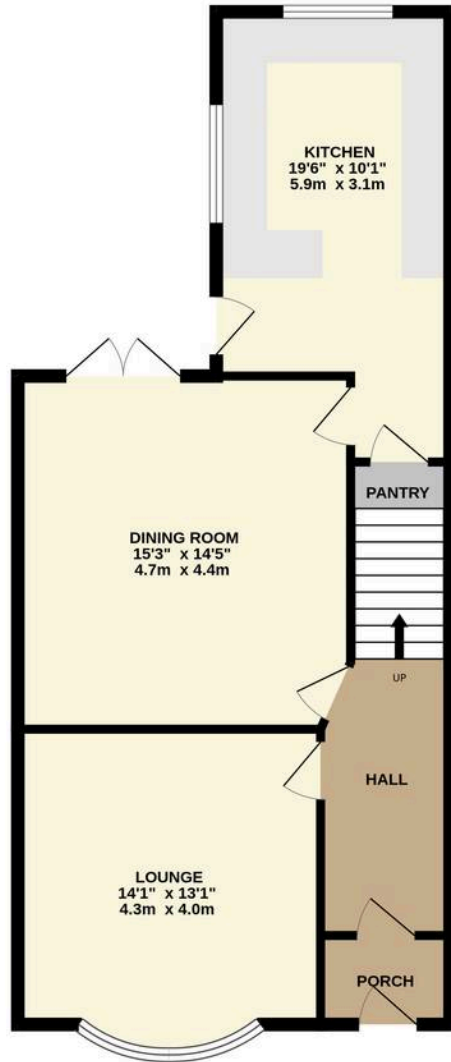








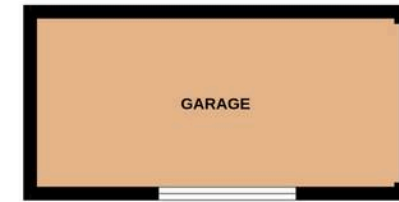
GROUND FLOOR
692 sq.ft. (64.3 sq.m.) approx.



1ST FLOOR
685 sq.ft. (63.6 sq.m.) approx.



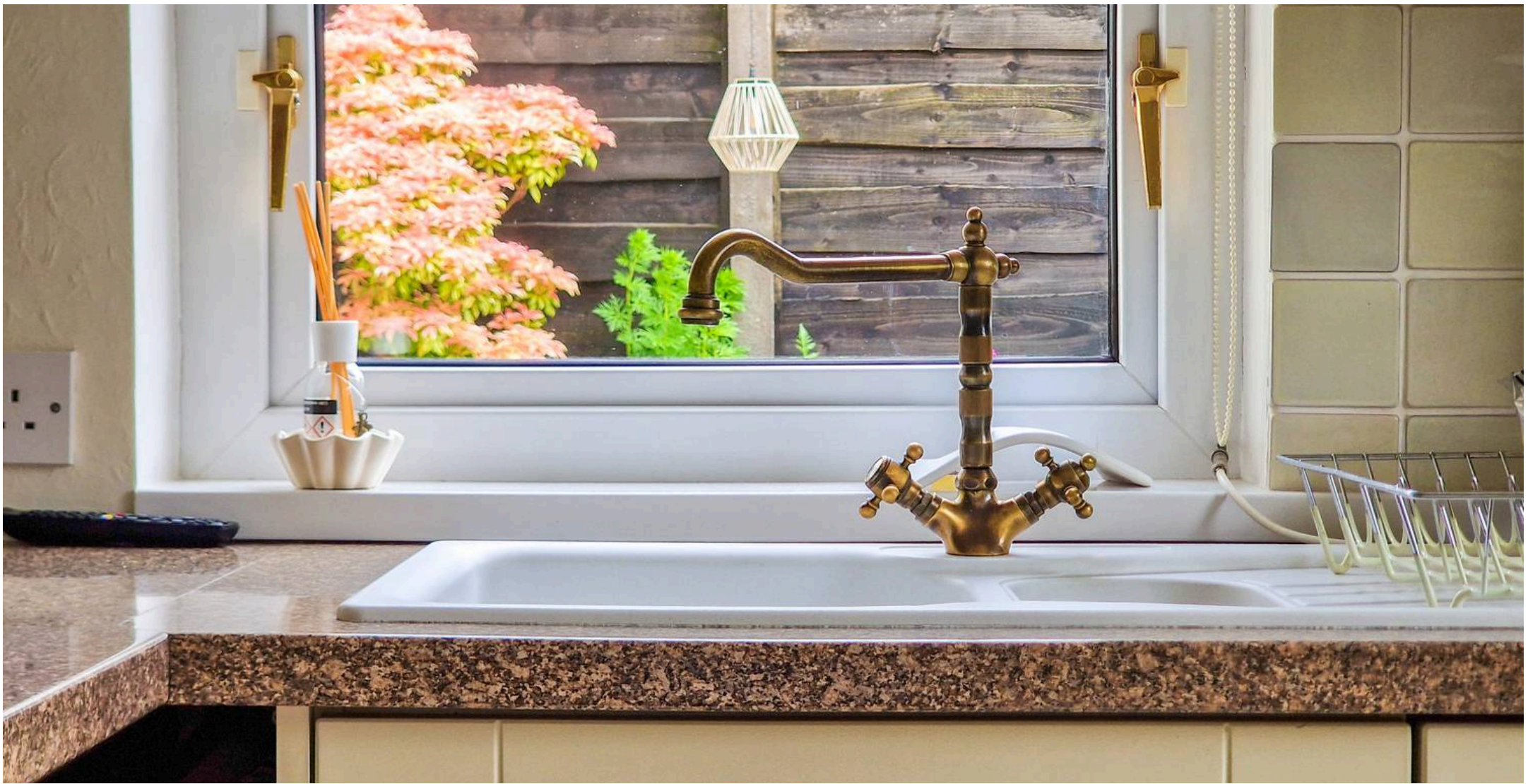
GARAGE
126 sq.ft. (11.7 sq.m.) approx.



TOTAL FLOOR AREA : 1503 sq.ft. (139.7 sq.m.) approx.

Whilst every attempt has been made to ensure the accuracy of the floorplan contained here, measurements of doors, windows, rooms and any other items are approximate and no responsibility is taken for any error, omission or mis-statement. This plan is for illustrative purposes only and should be used as such by any prospective purchaser. The services, systems and appliances shown have not been tested and no guarantee as to their operability or efficiency can be given.

Made with Metropix ©2026



HARRISON ESTATE AGENTS

Harrison Estate Agents, 10 Bolton Street - BL9 0LQ

0161 797 8616

info@harrison-estates.co.uk

www.harrison-estates.co.uk