



41 Lowercroft Road, Bury

Bury

£450,000



41 Lowercroft Road

Lowercroft, Bury

Spacious five-bedroom character home over three floors with modern upgrades, double garage, woodland gardens, and excellent schools nearby in sought-after Lowercroft. Ideal long-term family home.

Council Tax band: D

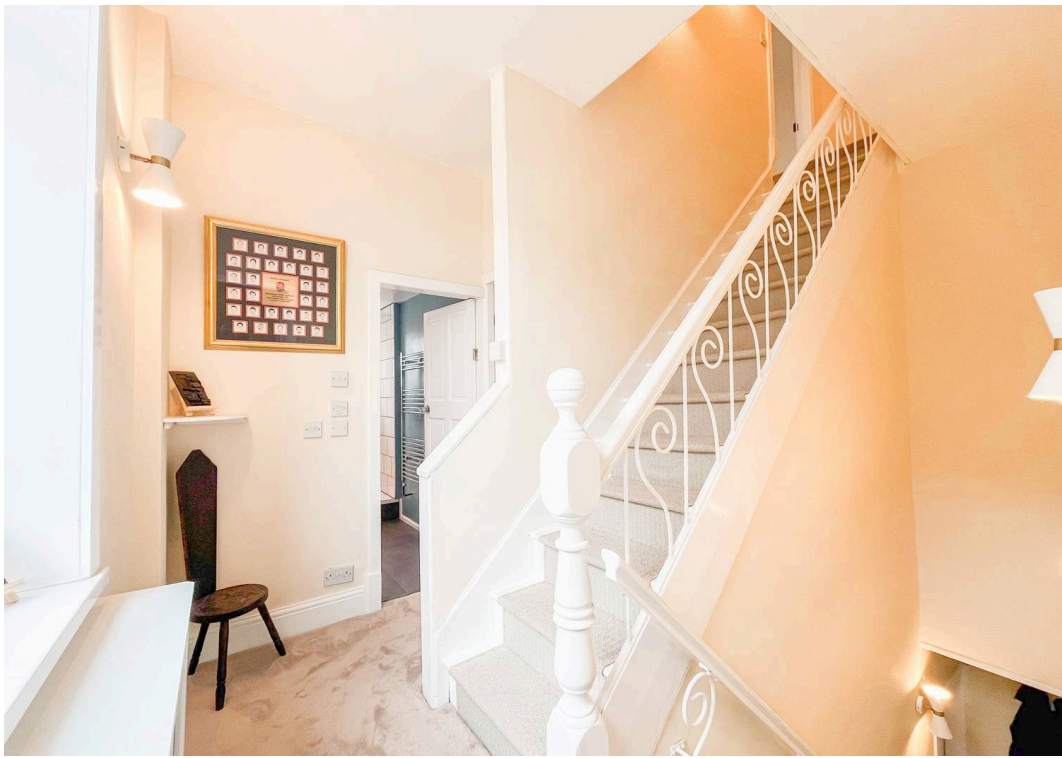
Tenure: Leasehold

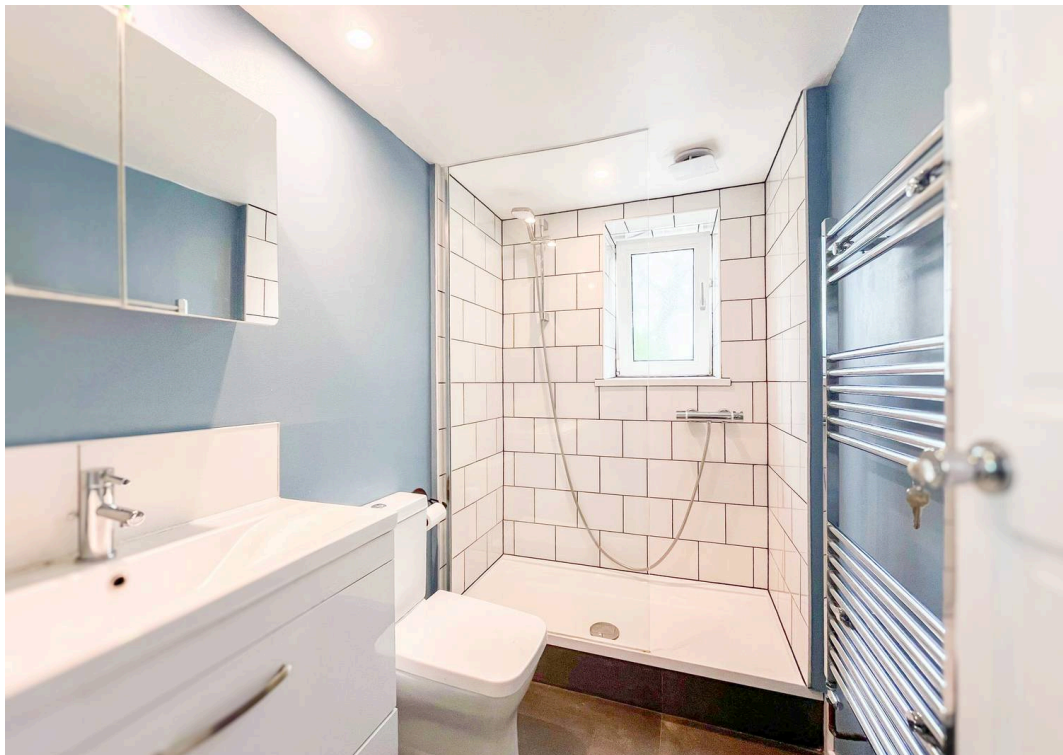
EPC Energy Efficiency Rating: E

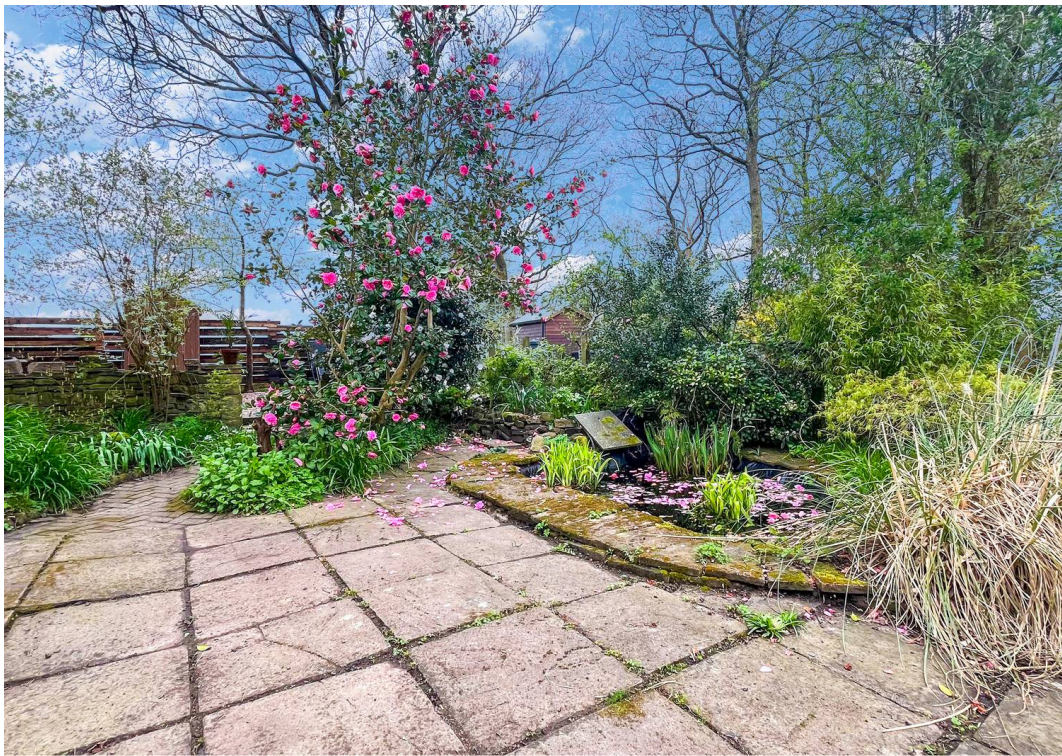
EPC Environmental Impact Rating: E

- Impressive five-bedroom character home with double garage, parking & serene woodland outlooks in highly desirable position
- Inviting lounge with multifuel stove, spacious dining room, newly fitted kitchen extension & spacious cellar
- First floor hosts two superb double bedrooms, stylish shower room. Top floor provides three further bedrooms, including a standout master suite with underfloor- heated ensuite bathroom & woodland views
- Attractive front lawn, enclosed rear courtyard garden surrounded by woodland
- Highly regarded Lowercroft setting with excellent primary and secondary schools, including Elton High School catchment
- Moments from local amenities, country walks and strong commuter links while enjoying the peace of a quiet, established residential street

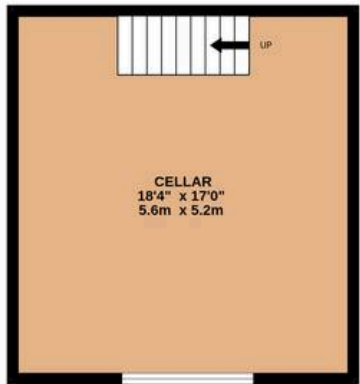








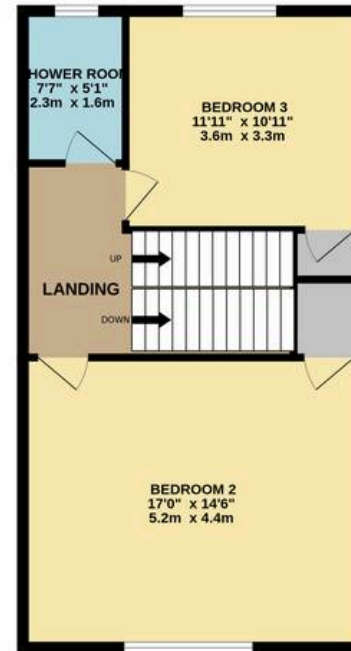
BASEMENT
312 sq.ft. (29.0 sq.m.) approx.



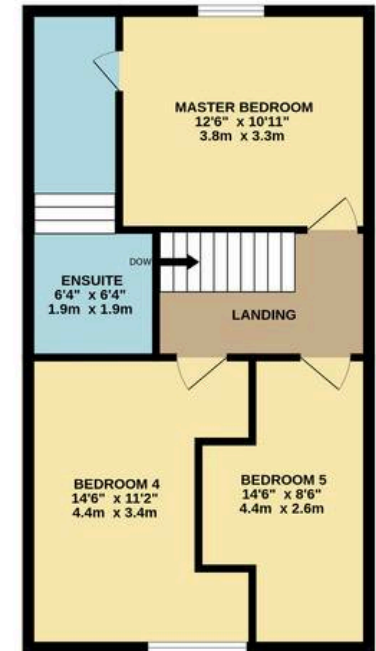
GROUND FLOOR
631 sq.ft. (58.6 sq.m.) approx.



1ST FLOOR
539 sq.ft. (50.1 sq.m.) approx.



2ND FLOOR
539 sq.ft. (50.1 sq.m.) approx.



TOTAL FLOOR AREA : 2021 sq.ft. (187.8 sq.m.) approx.

Whilst every attempt has been made to ensure the accuracy of the floorplan contained here, measurements of doors, windows, rooms and any other items are approximate and no responsibility is taken for any error, omission or mis-statement. This plan is for illustrative purposes only and should be used as such by any prospective purchaser. The services, systems and appliances shown have not been tested and no guarantee as to their operability or efficiency can be given.

Made with Metropix ©2026



HARRISON ESTATE AGENTS

Harrison Estate Agents, 10 Bolton Street - BL9 0LQ

0161 797 8616

info@harrison-estates.co.uk

www.harrison-estates.co.uk