



17 Seedfield Road, Bury

Bury

£289,950



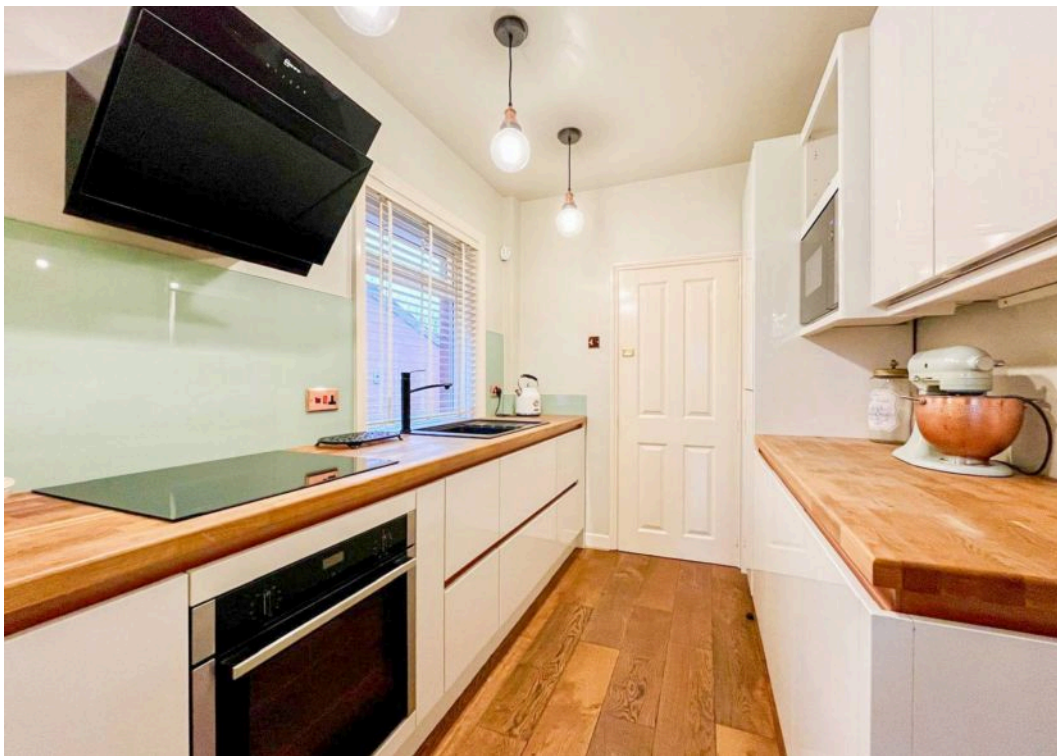
17 Seedfield Road

Bury, Bury

Spacious three-bedroom semi with two receptions, modern kitchen, large gardens, no chain. Sought-after Walmersley location near schools, transport, and amenities. Ideal for families or investors.

- Impressively sized mature three-bedroom semi-detached property offered with NO ONWARD CHAIN
- Two generously proportioned reception rooms providing flexible living and dining space
- Enclosed lawned garden and patio, benefitting from a 'sun-trap' aspect
- Three well-sized bedrooms including a spacious master with an attractive bay window
- Wide and welcoming hallway with roomy stairs and landing enhancing the sense of space
- Newly fitted kitchen complete with integrated appliances and modern finishes
- Practical utility room offering additional storage
- Modern white bathroom suite with shower plus a separate W/C
- Located in a popular residential area close to schools, shops, green spaces and excellent commuter links
- Attractive opportunity for first-time buyers, families looking for a larger home, or buy-to-let investors with clear potential to add value and NO ONWARD CHAIN







GROUND FLOOR
610 sq.ft. (56.7 sq.m.) approx.



1ST FLOOR
523 sq.ft. (48.6 sq.m.) approx.



TOTAL FLOOR AREA: 1133 sq.ft. (105.3 sq.m.) approx.
Whilst every attempt has been made to ensure the accuracy of the floorplan contained here, measurements of doors, windows, rooms and any other items are approximate and no responsibility is taken for any error, omission or mis-statement. This plan is for illustrative purposes only and should be used as such by any prospective purchaser. The services, systems and appliances shown have not been tested and no guarantee as to their operability or efficiency can be given.
Made with Metropix ©2020

HARRISON ESTATE AGENTS

Harrison Estate Agents, 10 Bolton Street – BL9 0LQ

0161 797 8616

info@harrison-estates.co.uk

www.harrison-estates.co.uk