



56 Mile Lane, Bury

Bury

£439,950



56 Mile Lane

Seddons Farm, Bury

Spacious detached home on a corner plot in Seddons Farm estate. Open-plan lounge, modern kitchen, jacuzzi bath, two bedrooms, stunning gardens, double garage. Ideal location near OFSTED schools, transport links, and amenities.

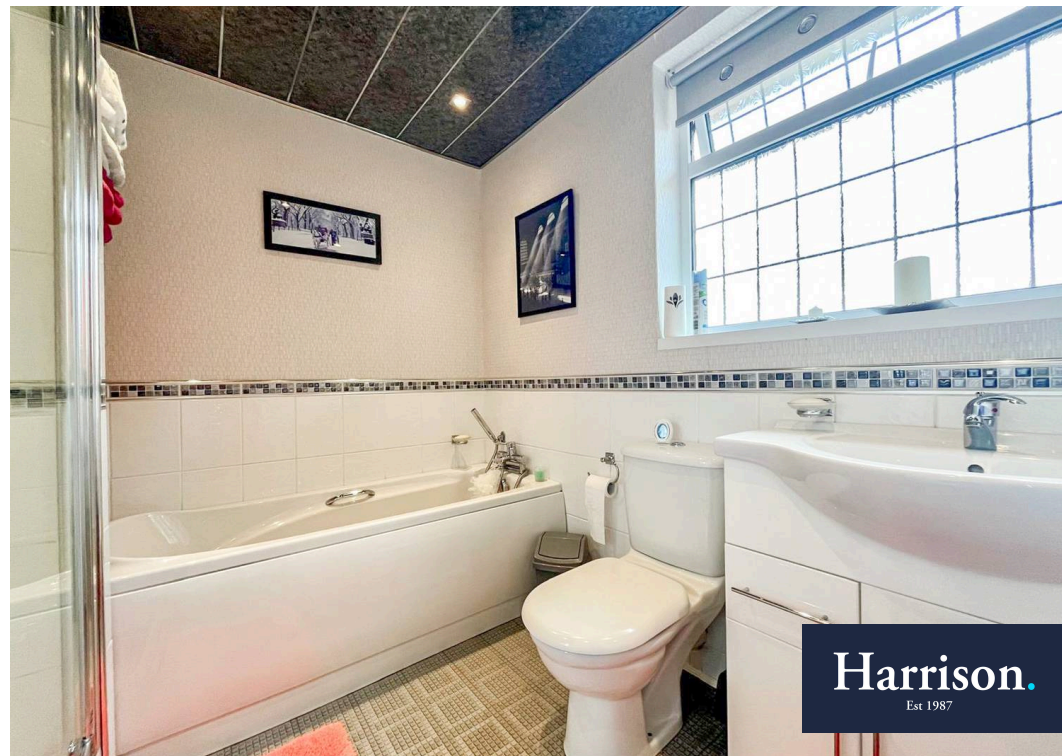
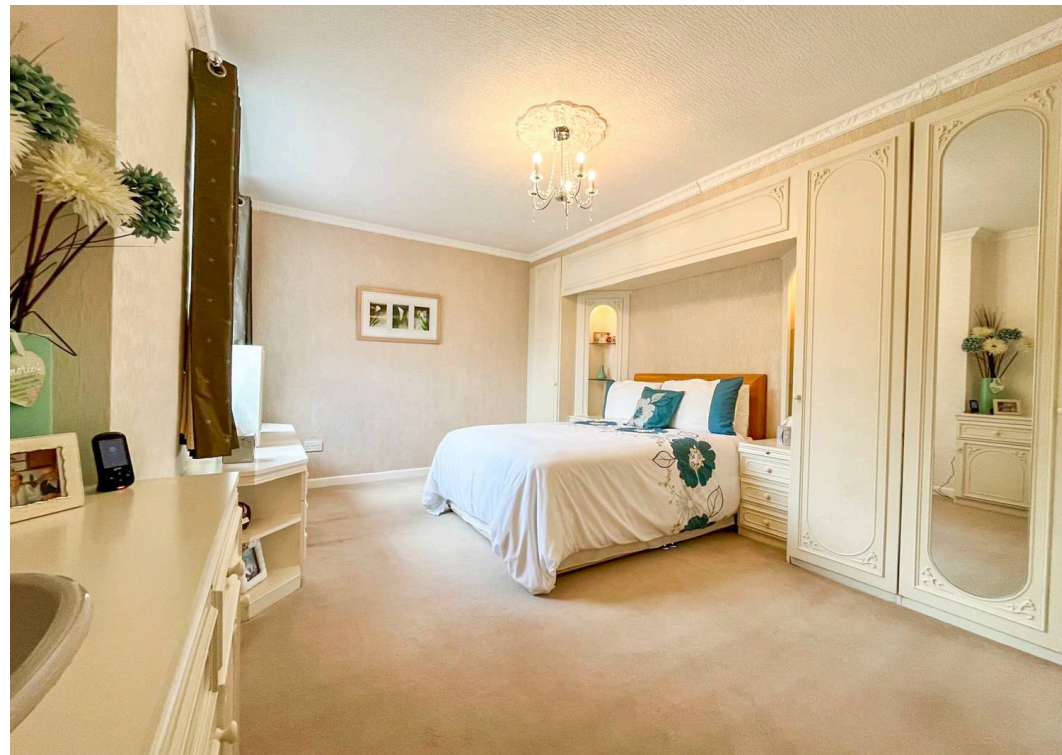
Council Tax band: D

Tenure: Freehold

EPC Energy Efficiency Rating: D

EPC Environmental Impact Rating:

- Spacious three-bedroom true bungalow set on an expansive, level plot
- Sought-after Seddons Farm location in a quiet, residential part of Bury, Greater Manchester
- Excellent commuter links via A58, M66, M60, & nearby rail stations to Manchester & Bolton
- Close to shops, cafés, supermarkets, and scenic countryside walks
- Generous, near-flat corner plot with wraparound gardens & 2 accessible driveways
- Open-plan lounge and dining area with dual aspect windows and generous floor space
- Contemporary white gloss kitchen with integrated appliances and efficient layout
- Large family bathroom with full-size bath, modern tiling, and chrome fittings
- Large garage, offering additional parking or space for ample storage





GROUND FLOOR
1309 sq.ft. (121.6 sq.m.) approx.





HARRISON ESTATE AGENTS

Harrison Estate Agents, 10 Bolton Street - BL9 0LQ

0161 797 8616

info@harrison-estates.co.uk

www.harrison-estates.co.uk