



15 Mendip Crescent, Bury

Bury

£270,000





## 15 Mendip Crescent

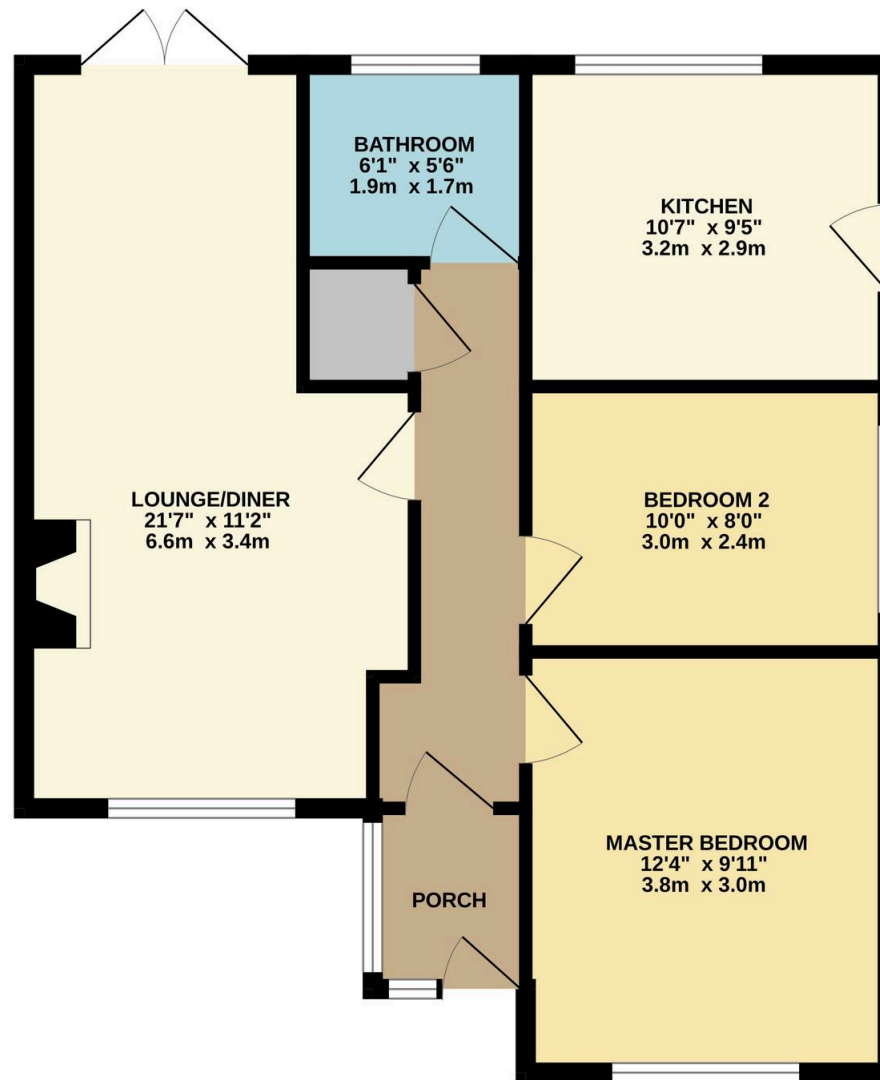
Bury, Bury

Council Tax band: D

Tenure: Leasehold

- WELL PRESENTED DETACHED BUNGALOW
- 2 DOUBLE BEDROOMS
- PORCH & ENTRANCE HALLWAY
- OPEN PLAN LOUNGE / DINING ROOM
- FITTED KITCHEN
- SPACIOUS DRIVEWAY WITH DETACHED GARAGE
- CHOICE WALSHAW PARK LOCATION
- NEW VALIANT BOILER
- NEW FIREPLACE & ALARM SYSTEM
- NO CHAIN
- VIEWING HIGHLY RECOMMENDED
- SUPERB LANDSCAPED GARDENS TO FRONT & REAR

GROUND FLOOR  
645 sq.ft. (59.9 sq.m.) approx.



TOTAL FLOOR AREA : 645 sq.ft. (59.9 sq.m.) approx.

Whilst every attempt has been made to ensure the accuracy of the floorplan contained here, measurements of doors, windows, rooms and any other items are approximate and no responsibility is taken for any error, omission or mis-statement. This plan is for illustrative purposes only and should be used as such by any prospective purchaser. The services, systems and appliances shown have not been tested and no guarantee as to their operability or efficiency can be given.  
Made with Metropix ©2025



