



2 Holbeach Close, Bury

Bury

£425,000



2 Holbeach Close

Bury, Bury

An imposing Freehold detached house with four double bedrooms in a highly desirable residential location of Brandlesholme, this property offers excellent extending potential on a spacious end plot.

Council Tax band: D

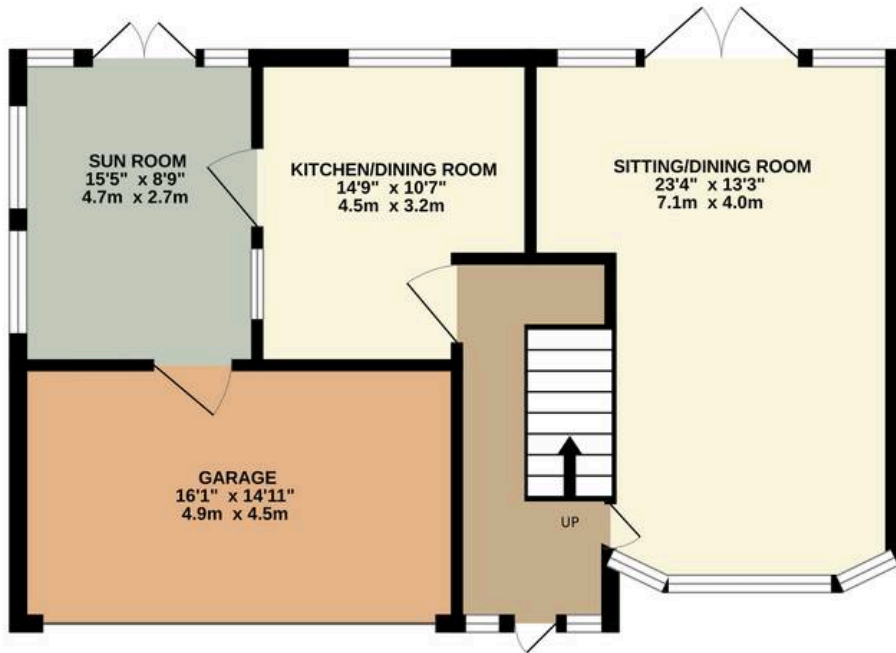
Tenure: Leasehold

EPC Energy Efficiency Rating: D

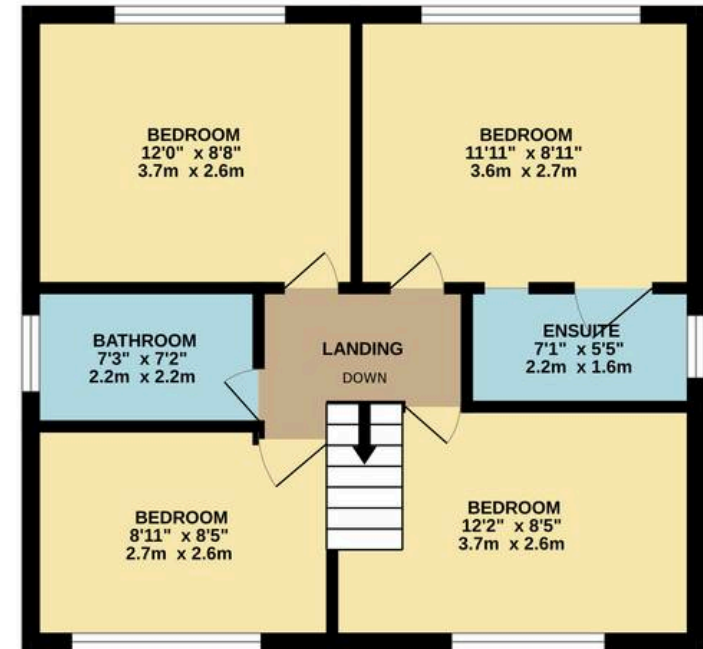
EPC Environmental Impact Rating: D

- - An Imposing Freehold Detached House with 4 Double Bedrooms
- - Set in a Highly Desirable Residential Location of Brandlesholme
- - Spacious End Plot with Excellent Extending Potential
- - An Attractive Substantially Sized Family Home with No Chain
- - Close to access for Local Amenities, Excellent Schools, Burrs Country Park & Kirklees Nature Trail
- - Porch, Entrance Hall, Open Plan Lounge/Dining room
- - Fitted Dining Kitchen, Sun Room/Conservatory
- - Spacious 4 Piece White Family Bathroom, Ensuite Shower room
- - Double Garage with Up & Over Door, Paved Driveway
- Well Maintained Spacious Lawn Gardens & Patio Area, Viewings are Essential

GROUND FLOOR



1ST FLOOR



Whilst every attempt has been made to ensure the accuracy of the floorplan contained here, measurements of doors, windows, rooms and any other items are approximate and no responsibility is taken for any error, omission or mis-statement. This plan is for illustrative purposes only and should be used as such by any prospective purchaser. The services, systems and appliances shown have not been tested and no guarantee as to their operability or efficiency can be given.
Made with Metropix ©2024

