



14 Neston Road, Walshaw

Bury

£239,950



## 14 Neston Road

Walshaw, Bury

Council Tax band: C

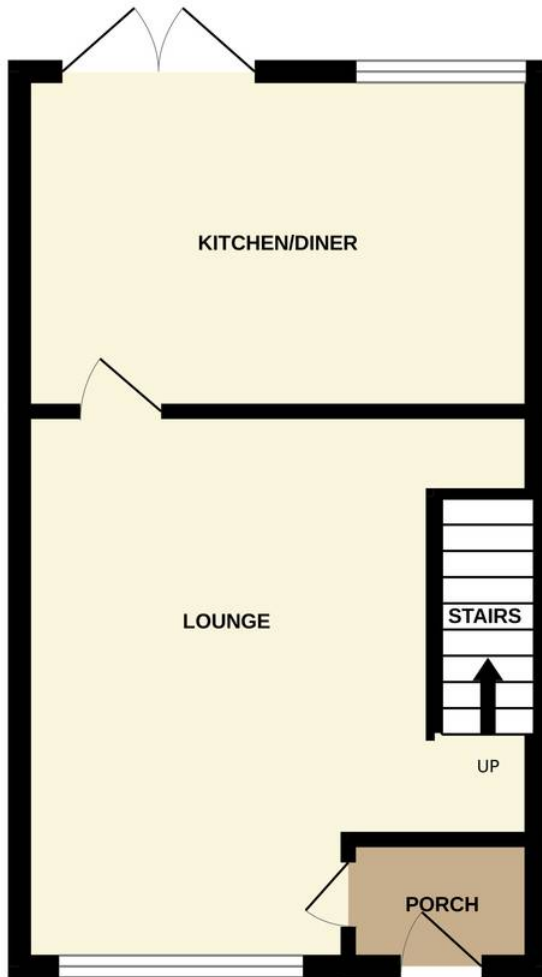
Tenure: Leasehold

EPC Energy Efficiency Rating: D

EPC Environmental Impact Rating: D

- - Impressive semi detached house with 3 bedrooms
- - Set in the choice location of Walshaw
- - Catchment for Christ Church Primary, Tottington Primary & Elton High
- - Close to local amenities, pubs, restaurants & scenic walks
- - Porch, spacious lounge, stylish fitted dining kitchen
- - Contemporary white 3 piece bathroom
- - Superb landscaped rear garden with circular lawn & patios
- Spacious block paved driveway
- - Viewing is essential to be fully appreciated

GROUND FLOOR



1ST FLOOR

