



42 Dalton Street, Bury

Bury

£260,000



42 Dalton Street

Bury, Bury

We are Delighted to market this Superb Impressive Pre War Semi Detached House with 3 Bedrooms set in a Highly Popular & Convenient Location close to Local Schools, a variety of Amenities, Parkland, Bus Routes & walking distance for Bury Town Centre. This Tastefully Modernised Family Sized Home is Not to be Missed & Viewings are Essential to be Fully Appreciated.

Council Tax band: C

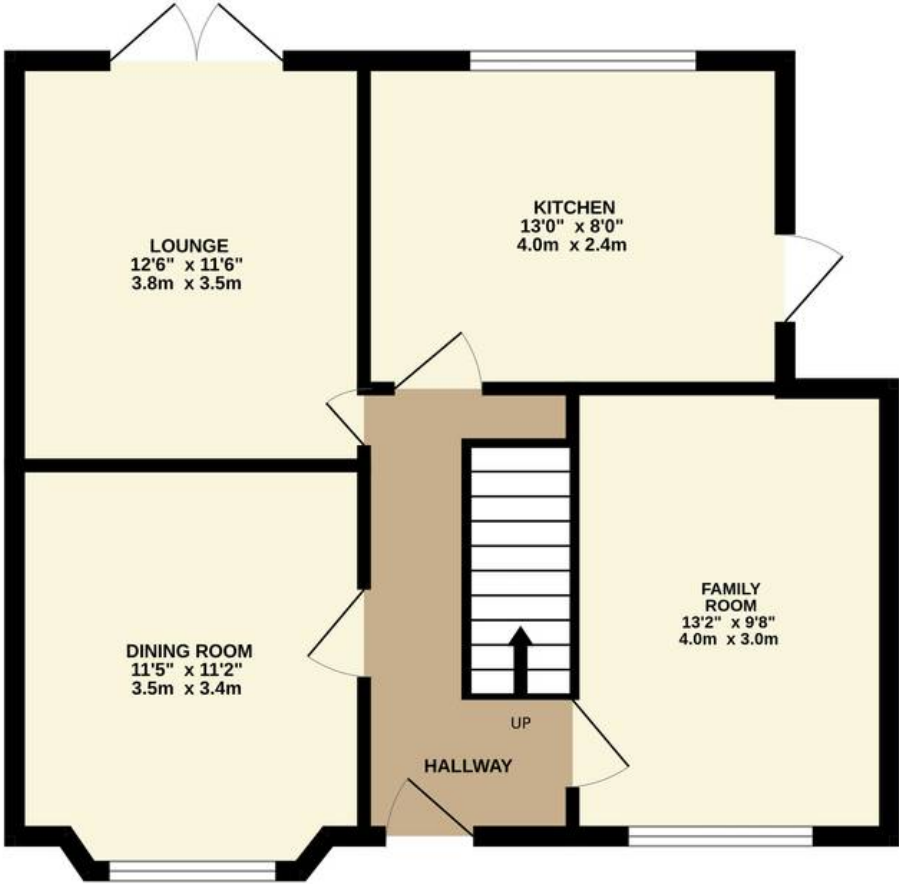
Tenure: Leasehold

EPC Energy Efficiency Rating: D

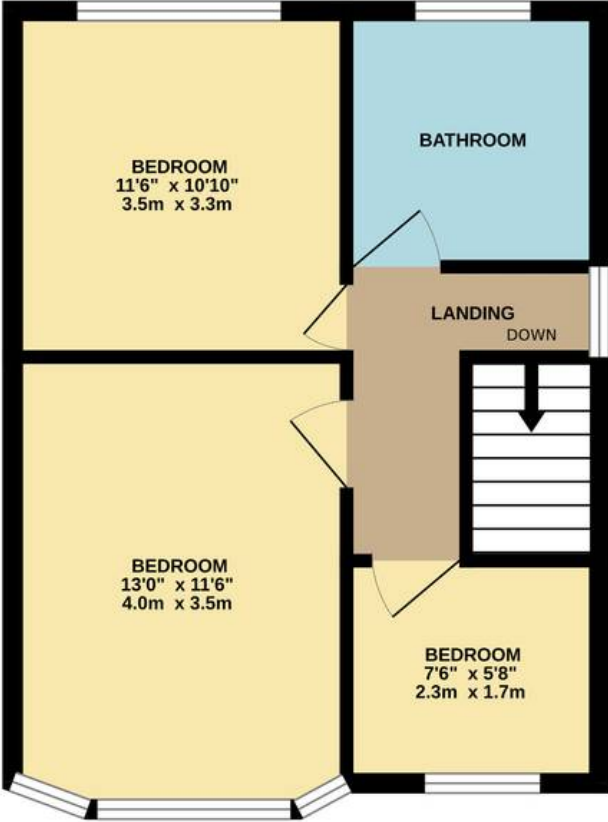
EPC Environmental Impact Rating: E

- A SUPERB & IMPRESSIVE EXTENDED PRE WAR SEMI DETACHED HOUSE WITH 3 BEDROOMS
- SET IN A HIGHLY POPULAR & CONVENIENT LOCATION
- CLOSE TO SCHOOLS, AMENITIES, BUS ROUTES & PARKLAND
- WALKING DISTANCE FOR BURY TOWN CENTRE
- BEAUTIFULLY PRESENTED THROUGHOUT
- HALLWAY, LOUNGE, SEPARATE DINING ROOM
- FAMILY ROOM/2ND LOUNGE, STYLISH FITTED KITCHEN
- STYLISH WHITE 3 PIECE BATHROOM
- LOW MAINTENANCE GARDENS TO FRONT & REAR, PAVED DRIVEWAY
- A NOT TO BE MISSED PROPERTY, VIEWING IS A MUST

GROUND FLOOR



1ST FLOOR



Whilst every attempt has been made to ensure the accuracy of the floorplan contained here, measurements of doors, windows, rooms and any other items are approximate and no responsibility is taken for any error, omission or mis-statement. This plan is for illustrative purposes only and should be used as such by any prospective purchaser. The services, systems and appliances shown have not been tested and no guarantee as to their operability or efficiency can be given.
Made with Metropix ©2024

